

Features

Compatible with Simplex ES Net and 4120 Networks
TrueSite Incident Commander provides 4100ES mounting for the Simplex® TrueSite Workstation:

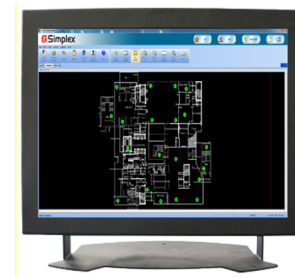
- **All-in-one touchscreen computer/monitor** mounts in a 4100ES cabinet and is powered from the fire alarm system power supply, including battery backup
- **Seismic hardware;** 4100ES mounting with battery brackets provides seismic area protection (see page 4)
- **High resolution** touchscreen monitor
- **Includes Windows 10 Enterprise** (64-bit)
- **Hinged mounting bracket** allows easy service access
- **Available for desktop use** operating at 120 VAC with an included power supply module

TrueSite Incident Commander function summary:

- **Simplex® fire alarm network connected** graphical interface control
- **Connects to the Simplex fire alarm Network** as a node allowing access to remote panel activity status, and for a Mass Notification System event or a fire alarm event, can take control of remote panel activity over the fire alarm network
- **Available TCP/IP, LAN/WAN connections;** up to 20 remote clients can be connected to the server for multiple remote users; with dedicated and listed Fire Alarm LAN equipment, listed remote clients can have control access
- **Supports standard fire service annunciation icons** to provide firefighter and first responders with critical fire response information
- **Custom alarm and system messages** guide emergency responders with important information
- **Color graphical annunciation and control** capacity for up to 100,000 points
- **Floatable and dockable windows** allows windows to either be fixed (docked) or floatable
- **Extensive historical logging;** up to 500,000 events with operator notations
- **Password Security** supports 8 to 16 alphanumeric passwords with configurable lockout
- **Optional interface to Digital Alarm Communicator Receiver (DACR)** integrates multiple systems onto a single Incident Commander
- **Backup Utility** can be configured to automatically backup specified directories including TSW job data to the secondary hard drive. The backup utility is available to systems that do not use RAID.
- **Multiple password** controlled operator levels
- **3rd Party Interface** open-architecture solution provides enhanced information access for advanced users
- **Available optional connections** for printers or other compatible systems
- **Dual monitor support** allows the Alarm List Window to be on one monitor and the Graphics Window on the other
- **Operating Systems;** Server and clients are compatible with Windows 7 & 10 Professional or Enterprise, Clients also compatible with Windows 7 Home Premium and Windows 10 Home (32-bit and 64-bit for all options)



TrueSite Incident Commander Mounts in Bay 2 of a 4100ES Control Panel (shown with Master Controller)



Desktop TrueSite Incident Commander

Graphic screens details:

- **Pan-and-zoom features** allow precise navigation
- **Configurable coverage zones** allow highlighted areas of activity in user defined zones
- **Auto-jump** allows the screen view to jump to a graphic or alarm list menu

Additional Incident Commander system features:

- **TrueSite Workstation Mobile Client** allows compatible iOS and Android devices to access system information
- **Export to XML** feature allows TrueSite Workstation data to be easily exported for report generation and customization
- **Test Mode** allows unobtrusive testing of selective devices without nuisance interruptions
- **Node Name** allows a description of the specific building or area associated with a point in views and reports
- **Vector information to supervised remote clients;** select by point, event category, panel, or custom list
- **Email generation** is available to send updates to individuals or to distribution lists with selectable content
- **Sound files (WAV)** can be used to create custom audible status annunciation with Agency listed desktop PC model 4190-7014
- **Fahrenheit or Celsius** temperatures can be displayed

* Refer to pages 5 and 6 for specific product listing details. CSFM Listing: 7300-0026:323. At the time of publication only UL and ULC listings are applicable to ES Net network products. Additional listings may be applicable; contact your local Simplex product supplier for the latest status. Listings and approvals under Simplex Time Recorder Co. are the property of Tyco Fire Protection Products.

Additional system features (Continued):

- **DACR Account Filter** allows Historical Log Reports to be Filtered by DACR Account for Quick Access and Verification
- **Operator Notes** allows an operator to log operator notes associated with individual events for historical records and retrieval
- **Web Browser Command Link** allows an external web page or link (web-cam, etc.) to be called with a single command
- **RAID 1 Support** provides a real-time “mirror” image on a secondary hard drive for enhanced life-safety workstation survivability. RAID support is available to systems that do not use the Backup Utility.

Agency listings:

- UL 864 as Fire Alarm Control Unit Annunciator (UOXX)
- UL 864 as Fire Alarm Proprietary Supervising Station Control Unit (UOJZ)
- UL 864 as Firefighter Smoke Control Station (UUKL)
- UL 1076 as Proprietary Burglar Alarm Unit (APOU)
- UL 1610 as Central Station Burglar Alarm Control Unit (AMCX)
- UL 2572 as Mass Notification System Supervising Station Control Unit (PGWM)
- ULC-S527 as Fire Alarm Control Unit Annunciator (UOXX7)

Simplex Fire Alarm Network capabilities:

- Multiple TrueSite Incident Commanders and TrueSite Workstations can be nodes on the same fire alarm network to provide redundant operations for improved survivability
- Standard fire alarm network connection for wired or fiber optic media
- Graphical network diagnostic tools
- Set-host service functions allow access to remote network node data including individual TrueAlarm analog sensors
- Provides event printing (with compatible printer), view or print of status and service report information, and print graphic screens (see page 7 for printing details)
- Please refer to TrueSite Workstation data sheet S4190-0016 for additional operation detail

Description

The TrueSite Incident Commander offers TrueSite Workstation operation in an all-in-one package providing a touchscreen computer, monitor, hard drive, and required input/output connections in single assembly. This allows installation within a 4100ES fire alarm control panel or remote annunciator with power supplied from the fire alarm power supply and secondary batteries. The all-in-one computer is also available for desktop applications (requires separate AC power).

Network Annunciation. TrueSite Incident Commanders provide annunciation, status display, and control for Simplex Fire Alarm Networks using a personal computer based graphical interface with a high resolution, color display. Response buttons with realistic icons provide control switches specific to the operation being performed.

Remote Clients. For remote viewing of TrueSite Incident Commander Server information, remote clients are available and connected using TCP/IP LAN/WAN Ethernet communications. As discussed on pages 8 and 9, Remote Clients can be annunciation only, or capable of system control when configured with agency listed hardware.

Description (Continued)

DACR Compatible. For systems requiring information from remote control panels via DACTs (Digital Alarm Communicator Transmitters), Incident Commanders can be equipped to communicate directly with a compatible DACR. (Refer to data sheet S4190-0016 for more DACR details.)

TrueSite Incident Commander Operation

Operation. When fire alarm network status changes occur, the screen displays the type and location of the alarm (or other activity) and the appropriate header buttons appear. In the historical log screen on page 3, Figure 1, Fire, Priority 2, Supervisory, and Trouble buttons are shown with an active Trouble indicated.

Sample Screens. Figure 1 (on page 3) is representative of a historical view screen. Figure 2 (on page 4) is representative of a system graphic screen with icons representing the devices of interest. Screen choices can be configured per system preference, however, when using an optional second monitor, both screen types can be visible for operator convenience.

Ease of Operation. With touchscreen monitors, the operator selects the area in alarm to access a more detailed view of the alarmed zone or device. Where control operation is permitted by local listings, the authority having jurisdiction (AHJ), Civil Defense, or equal; and with proper password access, the operator can acknowledge alarm and trouble conditions, activate signal silence, and perform system reset directly from the Incident Commander screens.

Programmable Activity Timeout allows an unattended monitor to revert to the login screen when the configured time period expires.

Individual User Preferences appear when the user logs in. Options include: font size, toolbar size; interface theme (MS Office 2003 or system); floating window options (select whether to show menu bar or show tool bar).

Historical Log and List Details. Figure 1 on page 3 shows historical log details. The display format is similar to the display for active list items such as the alarm list. Displayed information can be sorted on-screen by each category shown (number, time, date, point name, etc.). List information can be reviewed on the screen, printed at a local or remote system printer, or can be written to an electronic file for compatibility with spreadsheet and database programs.

Customized Response. Custom alarm and trouble messages can be added and field edited to provide operator response assistance. Point specific information, such as hazardous material storage and lists of people to notify, can be automatically or selectively displayed.

Password Control

Multiple Access Levels. Operator access level is determined during log-in. Select functional access to match the training and responsibility of the operator. Operators with additional TrueSite Incident Commander and fire alarm network training may be qualified for access to sensitive areas. For operators who are primarily concerned with immediate facility security, a lower level access will provide the information necessary for proper response but will not allow access to key parameters that determine overall system/network operation.

Graphics Screens

Site and Floor Plan Details. Graphics screens can provide easily recognizable site plan and floor plan information. The level of detail can be customized for the specific facility to easily and accurately direct the operator to the immediate area of interest.

Graphic Screen Controls. (refer to graphic screen on page 4) Icons can be added to identify the location and type of the device of interest and the graphics control toolbar (located at the top of the graphic) can be used to pan and zoom for more precise detail. Programmable coverage zones can be added with selectable area and zoom level. A fixed area site plan (key plan) with action buttons and screen locator can be added as shown. Pan and zoom are tracked by a green rectangle in the key plan.

Custom Banner and Main Screen Background.

The banner area shown with a Simplex logo in Figure 1 can be customized (bitmap area is 2250 x 68 pixels). The main screen background (viewable prior to login) can be customized with a bitmap of up to 1000 x 525 pixels.

Action Messages. In addition to screen text or graphic information, the operator can be presented with specific action messages that provide emergency response information and directions. These action messages are easily field edited for local requirements. The appropriate action message would be located in an Acknowledge dialog box as shown in the graphics screen on page 4.

Graphics Screens (Continued)

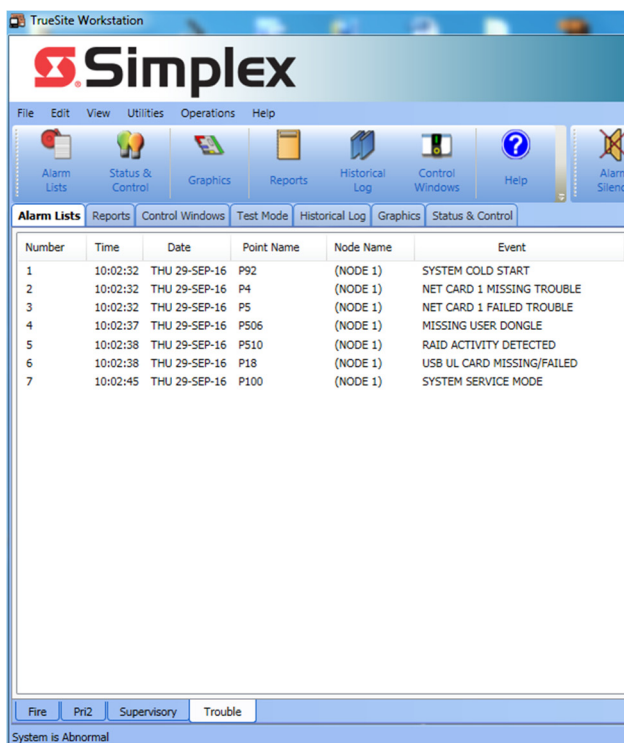
Auto-Jump to Graphics or Alarm List. Select whether activity should cause a jump to a list format or to the associated graphic screen.

Supported Graphics Formats:

- DWG Import Formats: AutoCAD R9, 10, 11-12, 13, 14, 2000-2002, 2004-2006, 2007-2009, 2010-2011
- DXF Import Formats: AutoCAD R14 and 2000
- Export Formats: AutoCAD 2000 DWG/DXF format (allows editing in AutoCAD 2000 or later)
- Import drawing files: DWG, WGS, IMS/GCC DOC files, WMF, BMP, GIF, and JPG

Individual Point Service Access

Qualified Operator Detail Access. The Incident Commander operator's interface provides service level access to network information that is not normally "public." Network "private" point information can be accessed using the Set-Host feature, and logging into the database of the network and node of interest. With this operation, individual point information can be accessed and controlled as required by qualified service personnel with proper password access.



Number	Time	Date	Point Name	Node Name	Event
1	10:02:32	THU 29-SEP-16	P92	(NODE 1)	SYSTEM COLD START
2	10:02:32	THU 29-SEP-16	P4	(NODE 1)	NET CARD 1 MISSING TROUBLE
3	10:02:32	THU 29-SEP-16	P5	(NODE 1)	NET CARD 1 FAILED TROUBLE
4	10:02:37	THU 29-SEP-16	P506	(NODE 1)	MISSING USER DONGLE
5	10:02:38	THU 29-SEP-16	P510	(NODE 1)	RAID ACTIVITY DETECTED
6	10:02:38	THU 29-SEP-16	P18	(NODE 1)	USB UL CARD MISSING/FAILED
7	10:02:45	THU 29-SEP-16	P100	(NODE 1)	SYSTEM SERVICE MODE

Fire Pri2 Supervisory Trouble

System is Abnormal

Figure 1. TrueSite Incident Commander Sample Alarm List Screen

Seismic Testing

The 4100ES cabinet mounted TrueSite Incident Commander design has been seismic tested and is certified to IBC and CBC standards as well as ASCE 7 categories A-F. Requires use of battery brackets detailed on data sheet S2081-0019.

Network Diagnostics

Graphical Network Status Views. Automatic, built-in diagnostics are available to provide graphical views of Network topology and Network status. Missing communications links due to wiring breaks or shorts as well as inactive network nodes are indicated clearly to guide in returning the system to normal. Information screens are available to provide detail about each specific network node. Network level functions such as timekeeper node and monitor node are indicated as well as identification of the node being used for the diagnostic.

4120 Version Compatibility*

4120 network product compatibility with TrueSite Incident Commander requires the following software versions:

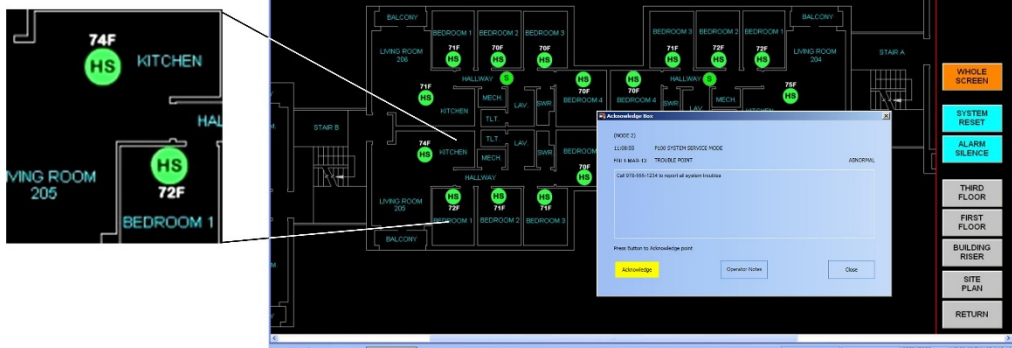
Fire Alarm Network Interface	
Network Interface	Compatibility
4190 GCC/IMS/NPU	Master Version 2.07 (or later)
4100U	Master Version 11.03 (or later)
4100	Master Version 9.02 (or later)
4020	Master Version 9.02 (or later)
4010	Master Version 3.01 (or later)
4002	Network Firmware Version 3.02.92 (or later)
2120 (SLI) Interface	
2120	Master Version 5.44 (or later) Network Interface Version 3.02 (or later)

* TSW 100,000 point capacity applies to ES series panels or DACR points only. Other legacy 4000 series panels are limited to a capacity of 62,500 points on the TSW (can be mixed with ES series panels reporting above the 62,500 point range). A TSW with a 2120 SLI interface is limited to 62,500 points for the entire system (including ES series panels and DACR points). TSW 100,000 point capacity requires TSW Version 3.04 (or higher) and ES Panels at Version 3.03.04 (or higher).

Sample Graphic Screen

Figure 2. TrueSite Incident Commander Sample Graphic Screen with Detail Enlargement and Acknowledge Box

(Note: This sample graphic screen demonstrates heat sensors (HS) dynamically displaying their local temperature readings)



ES Net Version Compatibility

ES Net product compatibility with TrueSite Incident Commander requires the following software versions:

ES Net software requirements	
Software	Required software version
Network Programmer	2.01 or above
ES Programmer	4.01 or above
TrueSite Workstation	5.01 or above
BNIC Application	1.01.03
ES Net firmware requirements	
Software	Required software version
4100ES panel	4.01 or above
4010ES panel	4.01 or above
TrueSite Workstation	5.01 or above
TrueSite Incident Commander	5.01 or above
BNIC EOS	1.01.03

Desktop Dimension Reference



TrueSite Incident Commander Product Selection

Category	Model	Description	Listings	
Hardware Systems (select as required – see notes)	4190-8404	TrueSite Incident Commander Annunciator Listings: For use as an Annunciator under: UL 864 and ULC-S527 Control Units and Accessories for Fire Alarm Systems; UL 2572 Control and Communication Units for Mass Notification Systems, UL 1076 Proprietary Burglar Alarm Units and Systems; and UL 1610 Central Station Burglar Alarm Units. Also for use as UL 864 UUKL Firefighter Smoke Control Station	UL Yes	ULC Yes
		TrueSite Incident Commander Supervising Station Control Unit Listings: For use as a Supervising Station Control Unit under UL 864. Reports and logs events; if an optional event printer is also desired see page 8 for printer information; if using a DACR for UL 864 listing select the Bosch D6600 with CID format. Also for use as UL2572 Supervising Station Control Unit for Mass Notification Systems ; UL 1076 Proprietary Burglar Alarm Multiplex Receiving Unit ; and UL 1610 Central Station Burglar Alarm Control Unit with listed DACR (see below for details)	Yes	No
	4190-8411	TrueSite Incident Commander Remote Client ; agency listed control capability requires supervision and connection to a dedicated Fire Alarm LAN. Note: The Incident Commander PC has 2 Ethernet ports. On ES Net networks, the ES Net NIC connection uses (1) Ethernet port leaving (1) Ethernet port available for a connection to either an agency listed (dedicated) Fire Alarm LAN or a customer's LAN (not both). Refer to data sheet S4190-0018 for additional information on Fire Alarm Network Ethernet Switches.	Yes	Yes
		Listings: For use as an Annunciator under: UL 864 and ULC-S527 Control Units and Accessories for Fire Alarm Systems		
Notes	All above	1. Requires selection of computer and software from list below 2. LAN/WAN connections require use of Transient Suppressor 4190-6010 (ordered separately, see page 6 for details) 3. A UL-1481 Listed Uninterruptible Power Supply (UPS) is required for secondary power per UL and ULC requirements (ordered separately, supplied by others)		
Category	Model	Description		
Aftermarket Additions	4190-8901	Aftermarket hardware addition		
	4190-8605	Aftermarket software addition		
Computer Type (select one as required)	4190-7031 4190-7033	4100ES Cabinet Mount ; computer for mounting into an existing 4100ES Fire Alarm Control Unit cabinet; 4100ES boxes, doors, and dress panels are ordered separately, see hardware reference below for model numbers. PCs are pre-installed with Windows 10 Enterprise 64 bit (includes CD and license) and TrueSite Workstation software (dongle not included). 4190-7031 is configured with a file Backup utility and no RAID controller. 4190-7033 is configured with RAID 1 mirroring and no file Backup utility (power supplied from 4100ES control unit power supply and secondary batteries).	19" Touchscreen computer/ monitor with UL I/O Card, compact keyboard and mouse	
	4190-7032 4190-7034	Desktop PC ; PCs are pre-installed with Windows 10 Enterprise 64 bit (includes CD and license) and TrueSite Workstation software (dongle not included). 4190-7034 has a RAID 1 controller configured. 4190-7032 has a backup utility and no RAID controller (requires separate AC power, not ULC listed).		
	4190-7014	Aftermarket PC ; Computer without application software and operating system. Use for replacement of existing Incident Commander PCs (desktop or 4100ES cabinet mount) where the existing application software and operating system are available to be installed on-site.		
Applications Software (select one per application)	4190-5050	TrueSite Incident Commander Server Software, includes: License, Security Dongle, Documentation; requires 4190-8404 or 4190-8405		
	4190-5053	TrueSite Remote Client Installation CD, no operating system; requires 4190-8411 or 4190-8605		
Server Feature Option	4190-5060	DACR Interface for a TrueSite Workstation Server		
	4190-5064	3rd Party Interface Software Package ; includes: (1) 3rd Party Interface Development Software; (2) A dedicated Security Certificate allowing server and client access for one 3rd Party Interface Application; and (3) A 3rd Party Feature Code allowing one 3rd Party Client connection to a single TrueSite Workstation; Note: A 579-1155 <i>Software Customer Information Form</i> is required to be submitted with the order		
	4190-5065	TrueSite Workstation Feature Upgrade ; includes the latest TrueSite Workstation software version and an Upgrade Feature Code to enable <i>new standard features</i> (new optional features are selected separately); without this upgrade, installing the latest software version provides updated performance improvements over previous versions but does not include new standard software features		
	4190-5067	TrueSite Workstation Mobile Client Feature ; quantity of (1) enables TrueSite Workstation information to be accessed from compatible mobile devices; access for mobile clients is enabled by entering an authorized feature code at the server; see data sheet S4190-0024 for more information		

TrueSite Incident Commander Product Selection (Continued)

Category	Model	Description
Remote Client Type Selection (Select <u>One</u> Per Remote Client)	4190-5061	Feature code for Remote Client with restricted features (reduced feature set)
	4190-5062	Feature code for Remote Client with password protected feature access
	4190-5066	3rd Party Interface Client for adding additional 3rd Party Client connections to an existing TrueSite Workstation 3rd Party Interface; includes a 3rd Party Client Feature Code for the selected quantity of concurrent 3rd Party Client Connections to a single TrueSite Workstation (maximum of five (5) per server) Note 1: When adding 3rd Party Interface Clients to more than one TrueSite Workstation Server, each server requires its own 4190-5066 Remote Client Selection; if a new 3rd Party Interface Application is being developed, feature code 4190-5064 will be required to provide a unique Security Certificate. Note 2: A 579-1155 <i>Software Customer Information Form</i> is required to be submitted with the order.
Serial Port Option (for Server only)	4190-6034	Quad RS-232 Serial Port PCI Card, select when more than two serial ports are required; PCI Slot card with pluggable terminal block output; one 4190-6026 suppressor is required per connection (see below)
Transient Suppressed Connectors (select as required)	4190-6002	Transient Protected Connector, select one per connection to a standard PC RS-232 serial port
	4190-6026	Transient Protected Connector for Quad Serial Port Card; one required per connection
	4190-6010	Transient Suppressor for LAN/WAN Connection; required for agency listing for each Incident Commander and Remote Client LAN/WAN connection, except for server to client connections when both are in the same room

4120 network options

Note: For additional information on 4120 Networks and 4120 network product specifications see data sheet S4100-0056.

Option	Configured	Aftermarket	Description	Size	Alarm/Supv.
Network Interface Modules (7 maximum)	4190-6061	4190-9829	Modular network interface card (select media modules separately, listed below); PCI slot card; supports Class B or Class X operation	1 PCI slot	46 mA
Media Modules for Modular Network Interface (as required)	4190-6036	4190-9822	Wired Media	N/A	55 mA
	4190-6301	4190-9851	Left port, single-mode 4120 duplex fiber media card	N/A	55 mA
	4190-6302	4190-9852	Right port, single-mode 4120 duplex fiber media card	N/A	55 mA
	4190-6303	4190-9853	Left port, multi-mode 4120 duplex fiber media card	N/A	55 mA
	4190-6304	4190-9854	Right port, multi-mode 4120 duplex fiber media card	N/A	55 mA

ES Net network options

Note: For additional information on ES Net networks and ES Net network product specifications see data sheet S4100-0076.

ES Net external NIC for TSW product selection

Model	Enclosure	Description	Power	Alarm/Supv.
4190-9832	Red	Connects a TSW or Incident Commander to the ES Network. ES panel network supports Class B or Class X operation, TSW connections are Class B. Includes (4) built in Ethernet ports, supports (1) additional media card. Ports A and C can be configured for earth fault detection. Wall mount enclosure measures 10in x 10in x 2.5in.	120/240 VAC	120 mA
4190-9833	Platinum		120/240 VAC	
4190-9834	Red		24 VDC	
4190-9835	Platinum		24 VDC	

Note: The 4190 Series External NIC is required for TSW or Incident Commander UL 1610 Central Station Burglar Alarm Control Unit applications

ES Net NIC cards for 4100ES, TrueSite Workstation, or Incident Commander

Model	Card type	Description	Size	Alarm/Supv.
4100-6104	Slot	Mounts in 4100ES cabinet. Connects a 4100ES FACU, TrueSite Workstation, or Incident Commander to an ES Net Network. Supports Class B or Class X operation. Includes (4) built in Ethernet ports, install to a single slot in a 4100ES bay. Supports up to (2) additional media cards. Ports A and C can be configured for earth fault detection.	1 slot	120 mA
4100-6310	Flat	Mounts in 4100ES cabinet. Connects a 4100ES FACU, TrueSite Workstation, or Incident Commander to an ES Net Network. Supports Class B or Class X operation. Includes (4) built in Ethernet ports, install to any (2) vertical block space in a 4100ES bay. Supports up to (2) additional media cards. Ports A and C can be configured for earth fault detection.	2 vertical blocks	120 mA

Notes:

- Network interface cards include built-in Ethernet network communication ports, order optional media cards as required.
- TrueSite Workstation connection is Class B, for Class X networks TSW connection must be 20 ft (6 M) maximum in conduit.
- For TSW or Incident Commander UL 1610 Central Station Burglar Alarm Control Unit applications use the 4190 series External NIC.

TrueSite Incident Commander Product Selection (Continued)

ES Net dual channel media modules for external NIC and 4100ES NICs

Note: DSL media cards are not ULC listed for fire alarm applications

Model	Description	Size	Alarm/Supv.
4190-9858	ES Net NIC Dual Channel Single-mode Fiber Media Card	N/A	135 mA
4190-9859	ES Net NIC Dual Channel Multi-mode Fiber Media Card	N/A	135 mA
4190-9857	ES Net NIC Dual Channel DSL Media Card	N/A	155 mA

Category	Model	Description
Programming (select)	4190-8122	TrueSite Incident Commander Programming; select Programming Items below
Programming Items (select items per system requirements; select quantity of items as required) requires selection of 4190-8122	4190-4006	AutoCAD DXF or DWG file, one floor plan (multiple floor plans require dedicated files)
	4190-4008	25 Custom Action Messages
	4190-4009	25 Travel Screen Keys (selective zooming)
	4190-4010	25 Status Icons
	4190-4011	25 Control Functions; On/Off, Bypass, etc.
	4190-4012	Convert one (1) Existing IMS Screens to TrueSite Incident Commander Screen
	4190-4013	10 Coverage Zones; order quantity as required
	4190-4014	One (1) Emergency Communications/Mass Notification Control Screen

Hardware Reference for Mounting TrueSite Incident Commander in Bay 2 of a 4100ES Fire Alarm Control Panel

Required Identifier	4100-7909	Designates that the 4100ES fire alarm control panel is to be shipped with bay 2 empty			
Selection Type	Description	Platinum 2 Bay	Platinum 3 Bay	Red 2 Bay	Red 3 Bay
Combined Box and Door	Box with Glass Door & Dress Panel	2975-9459	2975-9457	2975-9460	2975-9458
Separate Box and Door (select if boxes and doors are required to be shipped separately)	Box only	2975-9439	2975-9440	2975-9408	2975-9409
	Glass Door & Dress Panel	4100-2107	4100-2108	4100-2127	4100-2128

Remote Annunciator Panel Option

Model	Description
4100-9615	<p>Remote Annunciator Panel Mount; includes expansion bay with power distribution interface module (PDI);</p> <p>Bay 2 is dedicated for Incident Commander, order box and door separately (4100-7909 is not required);</p> <p>Select: RPS Remote Power Supply and 4100-0620 Basic interface; also allowed: 4100-1272 Phone Cards, 4100-1273 Phone Class A Adapters, 4100-6038 RS-232 Card, 4100-1293 Panel Mount Printer, and 4100-1290 24 Point I/O; order cabinet hardware separately per hardware for control panels above; refer to data sheet S4100-0038 for more Remote Annunciator details; Note: Refer to page 9 for power supply applications guidelines</p>

TrueSite Incident Commander Equipment Specifications

(Please note that equipment and specifications may vary due to equipment design changes)

Panel Mount Touchscreen Computer/Monitor (Note: Refer to page 9 for power supply applications guidelines)

Model*	Space Requirement	Current Requirements with 24 VDC Power from Control Panel		
4190-7031 4190-7033	Mounts in bay 2 of a 2-bay or 3-bay 4100ES cabinet	4190-7031 or 4190-7033 with Modules Listed	Supervisory	Alarm
		with 1 4120 Network Card	2.1 A	2.25 A
		with 2 4120 Network Cards	2.37 A	2.52 A
		with 1 4120 Network Card and 1 Quad Serial Card		
		with no network cards (use for ES Net network, ES Net NICs are mounted and powered external from the Incident Commander computer)	1.83 A	1.98 A
Individual Module Current Reference		4190-6034 Quad Serial Card	270 mA	
		4190-6061/4190-9829 Modular 4120 Network Card with two media modules, either 4190-6036/4190-9822 Wired, or 4190-6037/4190-9823 Fiber	270 mA	

Desktop Touchscreen Computer/Monitor

Model*	Dimensions (see diagram on page 6)	Input Power
4190-7032 4190-7034 4190-7014	17 ¹³ / ₁₆ " W x 16 ¹ / ₁₆ " H x 8 ³ / ₄ " D (452 mm x 425 mm x 221 mm)	2 A @ 102-132 VAC, 60 Hz (240 W) Operating Range: 100-240 VAC, 50/60 Hz

* All models include a separate 120 VAC power supply module. It provides normal power for desktop operation and can be used for separate pre-installation setup for 4100ES cabinet mount models. A 120 VAC cord is included; NEMA 5-15P plug to IEC-320 C-13 connector. For 230/240VAC use, locally obtain a cord in compliance with local safety standards.

Note: Agency listing is at 120 VAC, 60 Hz.

TrueSite Incident Commander Computer Feature Summary**

General Specifications	i5 2.4 GHZ (minimum) PC with cooling fan (4) GB RAM (minimum) (2) PCI Slots (2) 500 GB Hard Drives (minimum) (1) DVD/RW Drive	(2) Integral Amplified 2 Watt Speakers (1) VGA Video Output (required for optional 2nd monitor) Includes compact USB keyboard and mouse 100 mm VESA Mounting Interface
------------------------	---	---

TrueSite Incident Commander Server Computer Port Reference**

RS-232 Serial Ports	Two DB9 RS-232 ports standard, up to six RS-232 ports total with optional 4190-6034 Quad Serial Port Card (PCI Slot Module)
USB Serial Ports	Six total; five in the rear (one is used for Server Security Dongle), and one on the side
Ethernet Ports	Two RJ45 Gigabit Ethernet LAN ports
PCI Slots	Two available; Note: Server uses one for the Network Interface Card
Event Printing*	For agency listed proprietary supervising station operation and for other operations, if an event printer is desired, a supervised and dedicated Simplex model 4190-9013 agency listed dot matrix printer is recommended; connection is to USB, or Serial RS-232 port of the Server PC (see data sheet S4190-0011 for 4190-9013 printer details)
Other Printing*	For report, screen, or graphics printing, a Windows 7 compatible printer may be used; connection may be USB, Serial RS-232, or LAN/WAN connection via Ethernet
Printable Information	Event printing (with supervised and dedicated dot matrix printer 4190-9013 as explained above)
	Auto-print of auto-jump graphics; prints to Windows default printer
	Reports: Historical logs, System Activity, TrueAlarm Status, TrueAlarm Service, Analog Monitor ZAM Calibration, and Active List; displayed reports can print to a LAN connected (unsupervised) printer
	Screen captures (configurable as negative images to reverse black backgrounds)

**** PLEASE NOTE:** Simplex 4190 Series TrueSite Incident Commander computers are Agency listed for use with TrueSite Workstation software. For Desktop applications where Agency listings are not required, TrueSite Workstation software should be compatible with most computers meeting the stated minimum specifications. However, due to computer manufacturers potentially using unique and/or proprietary drivers, hardware, or other software not tested with TrueSite Workstation software, there may be incompatibilities. If other computers are used, proper operation with TrueSite Workstation software may require technical adjustments by a qualified computer technician and would be the sole responsibility of the computer supplier and computer manufacturer.

Environmental Specifications

Operating Temperature	32° to 120° F (0° to 49° C)
Operating Humidity	up to 93% RH, non-condensing, at 90° F (32° C)

* **Note:** Parallel port printer connection is supported on 32-bit operating systems only.

Server/Client Operation

TrueSite Incident Commander Computer. The TrueSite Incident Commander computer provides the functions of the Server and the system configuration tools. To access the desired features, a system/job specific security service dongle is supplied and is required. For systems not using Remote Clients, the setup of the TrueSite Incident Commander PC is similar.

Remote Client. For access to TrueSite Incident Commander information at a remote location, a compatible computer, connected via a Local Area Network (LAN) is equipped with Remote Client software. There are two types of Remote Clients, those with a restricted feature set (not capable of control); and those with a password protected feature set (capable of control). Refer to data sheet S4190-0018 for additional information about creating a proprietary fire alarm remote client LAN.

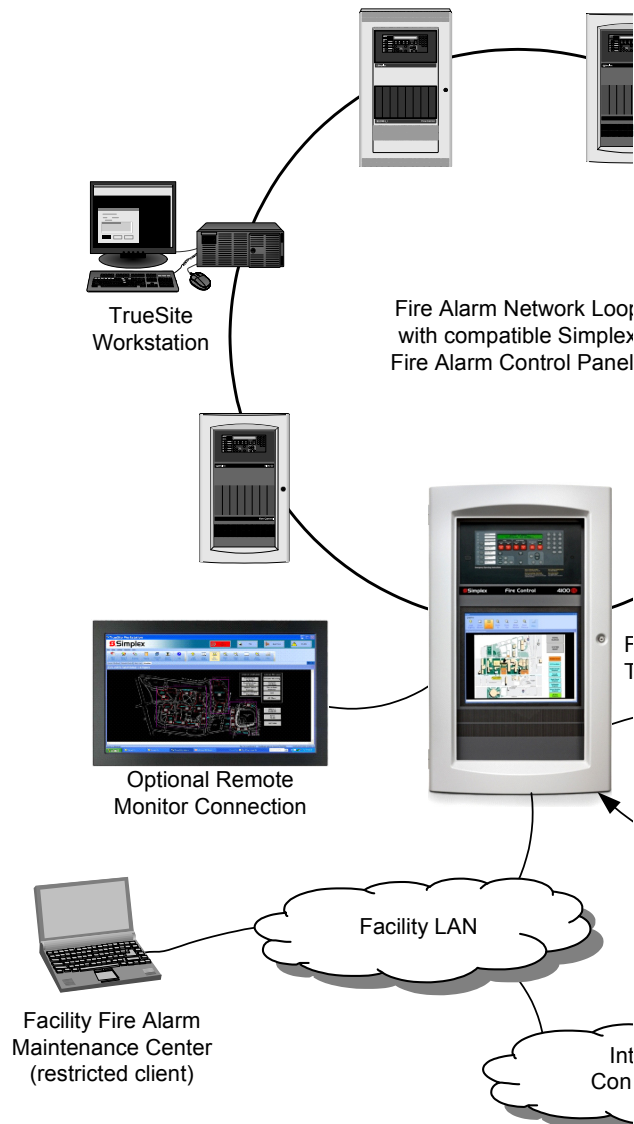
Supervised or Unsupervised Remote Clients.

Remote Clients can be designated as Supervised or Unsupervised. When Supervised, the connection is monitored by the TrueSite Incident Commander and a loss of connection is audibly reported at both ends along with a dialog screen. When unsupervised, only the client end displays a trouble dialog indicating disconnection from the Server. Remote clients may be laptop computers or other computers used for other functions and are periodically connected to query system status or create reports. (Refer to TrueSite Workstation data sheet S4190-0016 for additional Remote Client information.)

Remote Client Connections. The TrueSite workstation server supports a maximum of twenty (20) Supervised or Unsupervised remote clients, each capable of being on-line simultaneously.

(Server/Client Operation is continued next page)

System Overview Reference



Note: supports up to two 4120 network loops, or one 4120 network loop and one ES Net loop maximum.

Server/Client Operation (Continued)

TCP/IP Networks. The minimum recommended connection speed for TrueSite Incident Commander Server or Remote Client to a TCP/IP local area network is 3 Mbps.

Anti-Virus Software. When either the TrueSite Incident Commander Server or Remote Client computer is connected to a TCP/IP network other than a dedicated Fire Alarm network, it is highly recommended that regularly updated anti-virus software protection be installed on each connected computer. The TrueSite Incident Commander has been verified as compatible with Symantec EndPoint Protection 12.1.3 and McAfee Enterprise 8.8.

System Listings Reference

The following functions are agency listed with the computers and monitors identified under Product Selection on page 5:

- TrueSite Incident Commander PCs, whether stand-alone or functioning as a server to local and remote clients
- Supervised Remote Clients with protected features that are connected to the server using a dedicated Fire Alarm Network as described on page 8
- Refer to data sheet S4190-0018 for details about Fire Alarm Network Ethernet Switches

Additional agency listings reference:

- Restricted feature remote client software on compatible computers (listed for standard office use) provide annunciation features only and can be connected using a facility LAN without system listing impact

Power Supply Application Reference

When the TrueSite Incident Commander is panel mounted, the following power supply applications guidelines apply.

1. The power supply used to power the TrueSite Incident Commander must be dedicated to the TrueSite Incident Commander and internal card power only.
2. IDNet communications, Signal power, or Auxiliary (aux) power loads must be connected to a separate expansion power supply.

Additional Network Product Reference

Description	Document
4100ES Basic Panels with SPS Power Supplies	S4100-0031
4120 Network Products and Specifications	S4100-0056
ES Net Network Products and Specifications	S4100-0076
4100ES Basic Panels with EPS Power Supplies	S4100-0100
TrueSite Workstation	S4190-0016

Mass Notification Systems Reference

The TrueSite Incident Commander operates as a UL 2572 listed Fire Smoke Control Station (FSCS) when configured per the following:

1. Select model 4190-8401 (Note: Cannot be used for Supervising Station or Security Monitor applications)
2. Provide an **audio system microphone mounted adjacent to the TrueSite Workstation**, either located within a 4100ES (or 4100U) Fire Alarm Control Panel or Remote Annunciator Panel, or use a Remote Microphone Assembly.
3. The 4100ES/4100U microphone options are Model 4100-1243 for Fire Alarm Control Panels and Model 4100-1244 for Remote Annunciator Panels (refer to data sheet S4100-0034 for details).
4. Remote Microphone Assembly Model 4003-9803 mounts separate from the control panel (refer to data sheet S4100-0053 for details).
5. **Note:** At least **two monitors must be connected** to provide the necessary display information (see exception below). One monitor is required to display the speaker zone status and the other monitor is required to display the event screen.
6. **Exception:** If a 4100ES/4100U Network Display Unit (NDU) is mounted adjacent to the TrueSite Workstation for network audio control with microphone access, a second monitor may not be necessary if the audio control status is viewable. Review the application with the local authority having jurisdiction (AHJ).